



RCPSG Postgraduate Diploma in Travel Medicine



ROYAL COLLEGE OF
PHYSICIANS AND
SURGEONS OF GLASGOW
TRAVEL MEDICINE

This course has been designed in line with the Faculty of Travel Medicine of the Royal College of Physicians and Surgeons of Glasgow's publications ['Good Practice Guidance for Providing a Travel Health Service'](#) and ['Recommendations for the Practice of Travel Medicine'](#).

The aim of this course is to develop and support healthcare professionals in their role as travel medicine practitioners. It offers an academic base that assists individuals to become autonomous and reflective practitioners in the delivery of travel medicine services. The course is delivered at postgraduate level and carries 120 credit points at SCQF Level 11.

The content and level of this course facilitates growth of higher audit processes in developing cognitive, leadership and practical skills. This will enhance travel medicine practitioners' practice, by enabling them to make sound judgements and apply best clinical practice or evidence-based theory to support their decision making. This will ultimately support client care, in situations prone to rapid change, and subsequently improve travellers' health.

About the course

This course consists of 8 postgraduate modules delivered over a period of 18 months. The course will be delivered by specialists in the travel medicine field using a blended model of two residential elements and online interactive learning. Students will be expected to attend and contribute to online educational and peer support platforms.

The residential weeks are mandatory. They contain essential live learning.

Fees: £4,395

The course fee for the Diploma is £4,395 and this will include Affiliate Membership of the Faculty of Travel Medicine, and access to TRAVAX for the duration of the course.

Once accepted onto the course, a deposit of approximately 10% of the course fee will be due to hold your place on the course. The remaining payment will be made over two further instalments.

Entry Requirements

Criteria for Admission

1. Applicants must be able to satisfy the general admission requirements of the Royal College of Physicians and Surgeons of Glasgow.
2. Academic Requirements
 - a. Applicants must hold a good UK Bachelor's Degree with Honours (2:1 or above) in Medicine and Surgery, Nursing, Dentistry, Paramedic Science, or Pharmacy, or;
 - b. Applicants must hold a UK Postgraduate Qualification in a health-related subject based on clinical experience., or;
 - c. Applicants must hold a good Bachelor's Degree with Honours (2:1 or above) from a recognised international provider of Higher Education in Medicine and Surgery, Nursing, Dentistry, Paramedic Science, or Pharmacy, or;
 - d. Applicants must hold a Postgraduate Qualification in a health-related subject based on clinical experience from a recognised international provider of Higher education, or;
 - e. Applicants must have a record of on-going professional development in their respective field if they do not hold a degree. This record must cover professional development with a significant clinical component from when the applicant began working in their field. This only applies to those who have been practicing without a degree since the year outlined in table 1.

Degree	Working Since
Medicine	-
Nursing	2009
Dentistry	-
Paramedic Science	2018
Pharmacy	1967

Table 1

3. Professional Requirements

- a. Applicants must hold a professional registration with the governing body for their profession in the country in which the applicant is resident.
- b. Applicants must have professional experience in travel medicine practice or aspire to practice in travel medicine as a consequence of successful completion of the Postgraduate Diploma in Travel Medicine.

Language requirements

Applicants with English as a second language will be assessed for suitability during the application process.

English language requirements for this level of study include:

International English Language Testing System (IELTS) Academic module (not General Training)

- overall score 6.0
- no sub-test less than 5.5

TOEFL IBT: 78; no sub-test less than:

- Reading: 17;
- Listening: 17;
- Speaking: 17;
- Writing: 17

or any other common equivalent English language qualification.

Assessment Methods

Students will undertake a variety of different assessment methods. This includes modular assessments, project work and objective structured clinical examination (OSCE) exams.

Course Level

The RCPSG PgDip in Travel Medicine is delivered at Masters level 11 on the Scottish Credit Qualification Framework.

Candidates who successfully complete the 8 modules within this Postgraduate Diploma, will have the opportunity to continue their studies towards a Masters in Advanced Practice with Glasgow Caledonian University.

Membership of the Royal College of Physicians and Surgeons of Glasgow

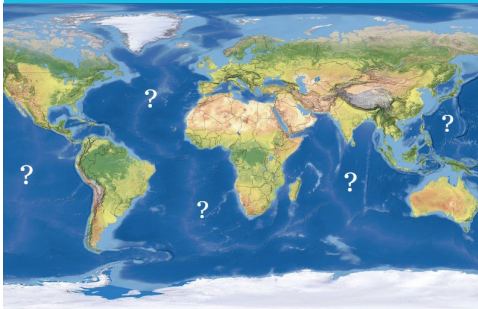
Those who successfully complete the course will be eligible for admission to Membership of the Faculty of Travel Medicine (MFTM).

Those who are non-members will be offered complimentary Affiliate Membership for one year and access to TRAVAX for the duration of the course.



Module 1

Epidemiology, Immunology and Travel Risk Assessment

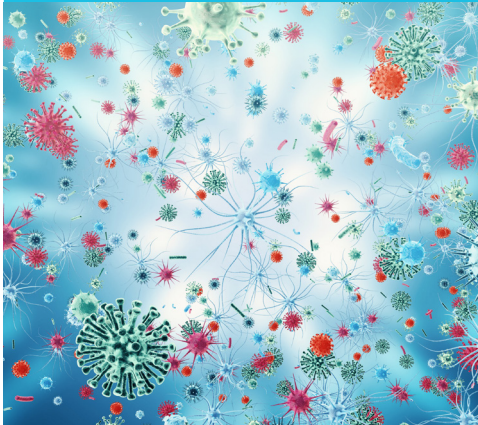


By the end of this module you will have knowledge and understanding of:

- Aspects of epidemiology in relation to the subject of travel medicine
- Principles of immunology in relation to travel medicine
- Critical evaluation of the principles underpinning a risk assessment
- Current key principles of behaviour and the human factors that lead individuals to make decisions which impact their health when abroad

Module 2

Non Vector Borne Infections



By the end of this module you will have knowledge and understanding of:

- The epidemiology, pathophysiology, clinical manifestations and impact of non vector borne infections
- Effective strategies for prevention of non vector borne infections, including immunisations to maximise protection of at-risk populations
- The relationship between travellers, host populations and non-vector borne infections and potential implications for travellers in the context of emerging infections
- Communication of risk assessment and behaviour modification strategies in the preparation of overseas travel, in relation to non vector borne infections

Module 3

Vector Borne Infections



By the end of this module you will have knowledge and understanding of:

- The various disease vectors and how they transmit infection
- Epidemiology and health implications of vector-borne infections with particular emphasis on malaria and current control approaches to prevent these infections
- Insect borne infection advice including bite prevention, vaccination where appropriate and in relation to malaria, chemoprophylaxis available and the factors affecting compliance with these measures
- The principles of diagnosing and treating malaria and other vector borne illnesses and resources that support accurate clinical decision making in relation to prevention and treatment of malaria in travellers

Module 4

Environmental Factors and Travel



By the end of this module you will have knowledge and understanding of:

- The principles of environmental conditions in the context of traveller's health
- The environmental impact overseas travel has on host communities alongside the travel industry economy
- Human pathophysiology and physiological effects of flying and the interventions that help prevent illness
- Risk of trauma to travellers and strategies for prevention
- Travel insurance and access to medical care overseas

Module 5

Advanced Research Methods



By the end of this module you will have knowledge and understanding of:

- Research philosophy
- Types of research and research approaches
- The research process, including literature searches, research design and methodology
- Data management and analyses

Module 6

The Complex Traveller - Pre and Post Travel



By the end of this module you will have knowledge and understanding of:

- Categories of travellers and the complex nature of their special travel requirements
- Risk factors associated with different categories of travellers and strategies and mechanisms for advising them for overseas travel
- Management of travellers returning with commonly presented infectious diseases

Module 7

Medical Conditions and Travel



By the end of this module you will have knowledge and understanding of:

- Medical conditions and the potential impact they could have on a traveller's health
- Complexities and implications relating to travellers with medical conditions, and current strategies used to prepare them for overseas travel

Module 8

Governance, Legal and Ethical Considerations



By the end of this module you will have knowledge and understanding of:

- The legal implications and ethical aspects that may affect some travellers
- Differences in legal structures, clinical governance and practice in relation to the delivery of travel medicine services

For more information:

W: rcp.sg/pgdiptm

E: pgdiptravelmed@rcpsg.ac.uk

T: +44 (0)141 227 3240

PGTM_A4_ (02/23)



ROYAL COLLEGE OF
PHYSICIANS AND
SURGEONS OF GLASGOW
TRAVEL MEDICINE